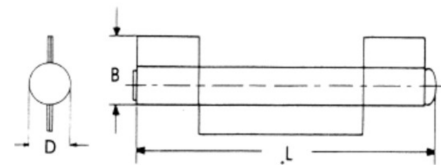


# CERNIERE A TRE ALI A SALDARE

- In acciaio
- Perno sfilabile in acciaio
- Ranelle in ottone



| B     | L      | Ø Perno | D       | Art.                |
|-------|--------|---------|---------|---------------------|
| 15 mm | 80 mm  | 8 mm    | 12 mm   | <b>F3970 201 10</b> |
| 21 mm | 140 mm | 11 mm   | 16,5 mm | <b>F3970 201 40</b> |
| 23 mm | 170 mm | 12 mm   | 18 mm   | <b>F3970 201 50</b> |