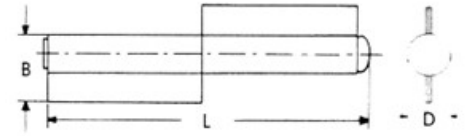


## CERNIERE A DUE ALI A SALDARE



- In acciaio
- Perno sfilabile in acciaio
- Ranelle in ottone



B	L	Ø Perno	D	Art.
15 mm	80 mm	8 mm	12 mm	<b>F3970 200 20</b>
18 mm	100 mm	10 mm	14,5 mm	<b>F3970 200 30</b>
21 mm	120 mm	10 mm	14,5 mm	<b>F3970 200 40</b>
21 mm	140 mm	11 mm	16,5 mm	<b>F3970 200 50</b>