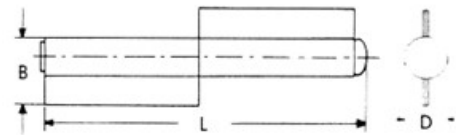


CERNIERE A DUE ALI A SALDARE



- In acciaio
- Perno sfilabile in acciaio
- Ranelle in ottone



B	L	Ø Perno	D	Art.
15 mm	80 mm	8 mm	12 mm	F3970 200 20
18 mm	100 mm	10 mm	14,5 mm	F3970 200 30
21 mm	120 mm	10 mm	14,5 mm	F3970 200 40
21 mm	140 mm	11 mm	16,5 mm	F3970 200 50
23 mm	170 mm	12 mm	18 mm	F3970 200 60